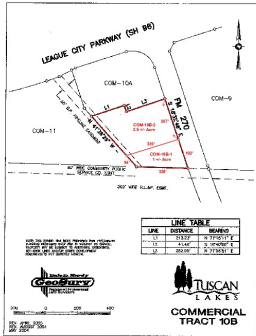


Commercial Land For Sale

Tuscan Lakes | League City, Texas
 SH 96 (League City Parkway) at FM 270 (South Egret Bay Blvd.)



Demographics 2021 Estimate

Population

1 Mile Radius: 7,152
 3 Mile Radius: 74,401
 5 Mile Radius: 163,933

Average HHI

1 Mile Radius: \$117,296
 3 Mile Radius: \$114,299
 5 Mile Radius: \$109,314

Traffic Count

FM 270 at SH 96 / SH 96 at FM270
 24,800 / 22,300 cars per day

Taxing Entities

League City, Galveston County, Dickinson ISD or Clear Creek ISD, and MUD

COM-10B Tuscan Lakes

Commercial land with frontage on FM 270 just south of the CVS.

Property Details

- ACREAGE 3.57 acres
- LAND USE Pad Sites, Office, Retail
- AREA Clear Lake Area
- LOCATION SH 96 (League City Parkway) at FM 270 (South Egret Bay Blvd.)



Contact Broker

Jennifer Johnson
 Vice President of Commercial Sales
jennifer@johnsondev.com

5005 Riverway, Suite 500
 Houston, TX 77056
 Tel: 713.960.9977
JohnsonDevelopment.com

More top-selling
 communities than
 any other developer
 in Texas!
2020

Johnson
 DEVELOPMENT CORP.



The information contained herein is believed to be correct. However, no warranty or representation is made. All prices are subject to change without notice and property is subject to prior lease, sale or withdrawal from the market without notice.